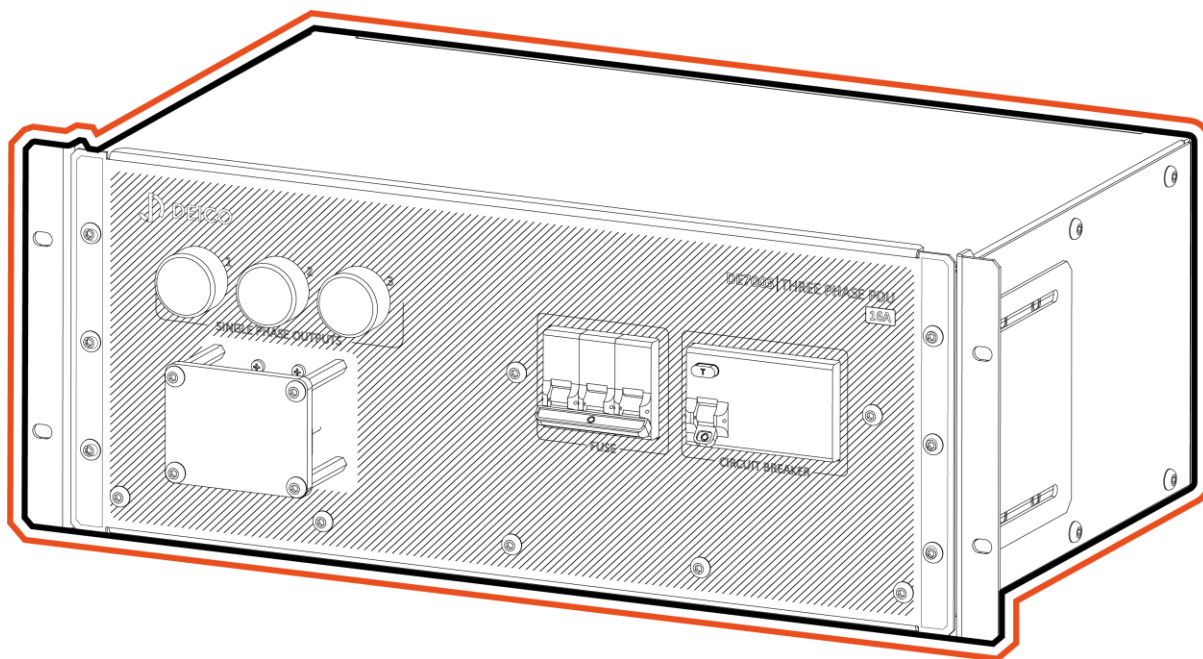


DE7003 DATASHEET

THREE PHASE PDU, 16A



Contents

DESCRIPTION.....	1
HARDWARE OVERVIEW	3
Circuitry.....	3
Hardware Specifications	4
Electrical.....	4
Physical.....	4
SAFETY GUIDELINES	4

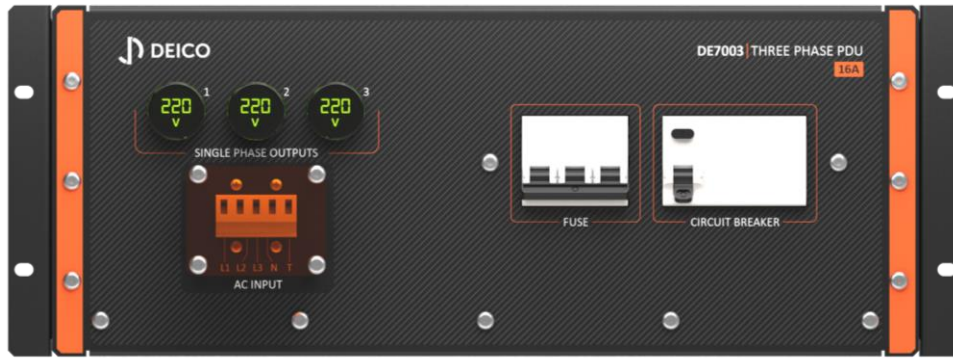
DESCRIPTION

The Three Phase Power Distribution Unit is a 4U rack-mounted device that offers switchable output. The Control Unit controls the Main Unit through the interconnection cable. Various cable types of varying lengths are available between the Control Unit and the Main Unit. On the Control Unit, there is an emergency stop button to disconnect from the mains in emergencies, as well as an on/off switch to toggle the mains connection. When the unit is powered, the status led on the Control Unit functions as an active status indicator.

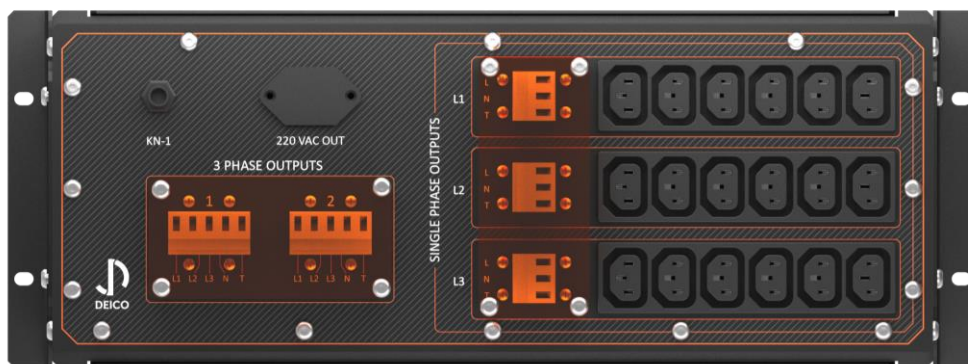
The Main Unit is powered by three-phase power. The Control Unit obtains its power from the Main Unit. There is one three-phase input on the Main Unit. The Main Unit features a residual current device and a fuse that serve as protection in hazardous situations. On the Main Unit, there are two terminal-type 380VAC outputs, six IEC 320-2-2/F type outputs (compatible with C14 Connector) for each phase group, and one terminal-type output. Voltage information for each phase group is displayed digitally.

Scope of delivery:

- ⇒ (x1) Three Phase PDU
- ⇒ (x1) Three Phase Power Distribution Control Unit
- ⇒ (x1) Power cable, 1m
- ⇒ (x1) Connection cable, 2m



Three Phase PDU Front View



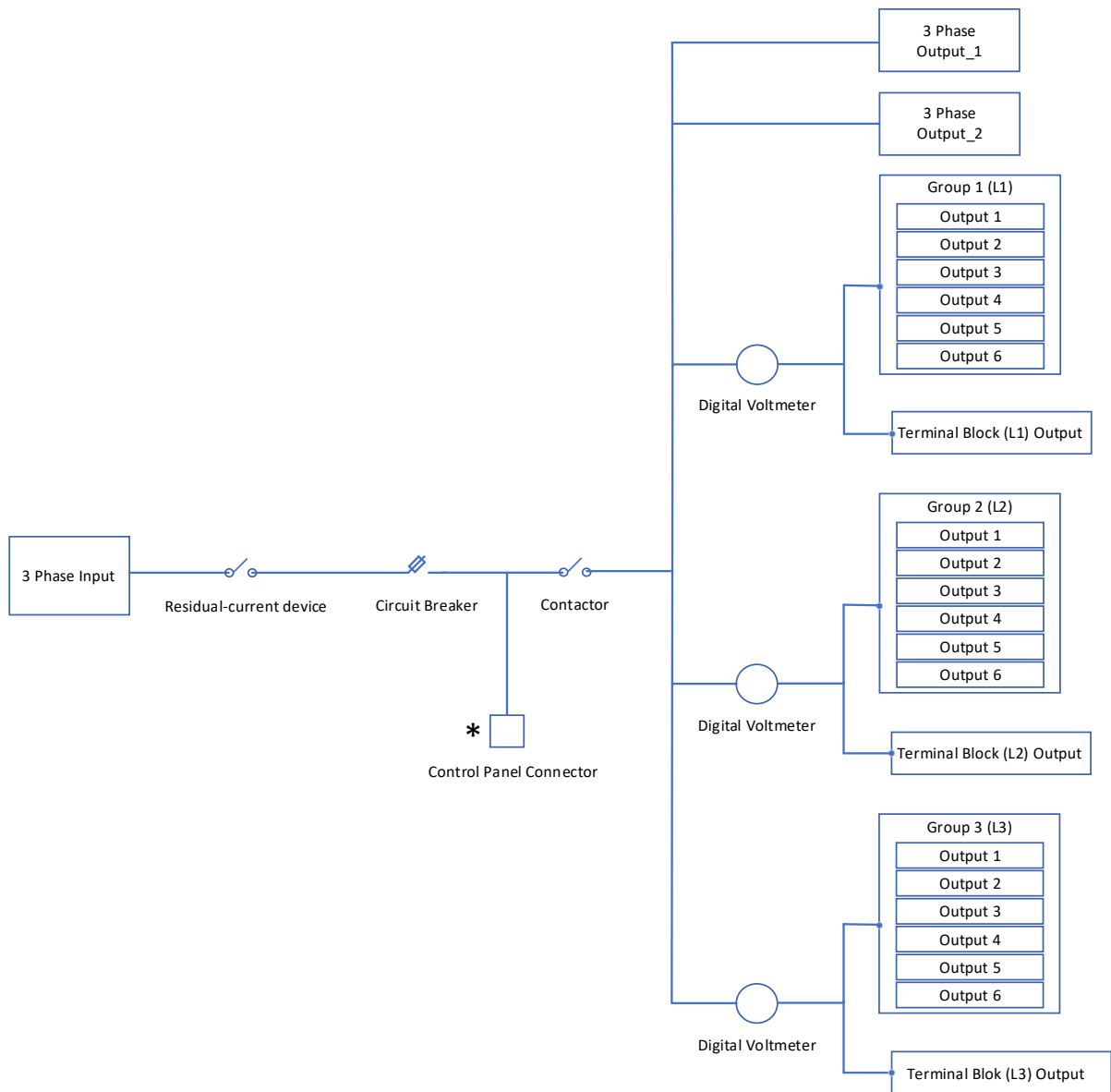
Three Phase PDU Back View



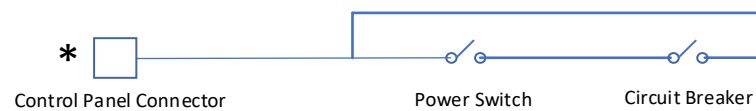
Three Phase Power Distribution Control Unit

HARDWARE OVERVIEW

Circuitry



Three Phase PDU Schematic



Three Phase Power Distribution Control Unit Schematic

Hardware Specifications

Electrical

Specification	Value
Rated Voltage	230V
Max. Input Current	16A
Input Frequency	50/60Hz
Input Power	3680VA
Number of Inputs (380VAC)	1
Input Type (380VAC)	0,2mm ² -6mm ² connector
Number of Outputs (380VAC)	2
Output Type (380VAC)	0,2mm ² -6mm ² connector
Number of Phase-1 Outputs (230VAC)	6+1
Number of Phase-2 Outputs (230VAC)	6+1
Number of Phase-3 Outputs (230VAC)	6+1
Phase-1 Output Type (230VAC)	IEC 320-2-2/F+ 0,2mm ² -6mm ² connector
Phase-2 Output Type (230VAC)	IEC 320-2-2/F+ 0,2mm ² -6mm ² connector
Phase-3 Output Type (230VAC)	IEC 320-2-2/F+ 0,2mm ² -6mm ² connector
Output Current per Bank	10A
Max. Total Output Current	16A
Number of Switchable 1 Phase	3
Number of Switchable 3 Phase	1
Total Number of Outputs	23
Overcurrent Protection	Available
Control Unit	Available

Physical

Specification	Value
Dimensions	480mm x 176mm x 343mm
Weight	5500g
Color	RAL9005*

*Marked feature is subject to change upon demand.

SAFETY GUIDELINES



Caution Do not operate the DE7003 in a manner not specified in this document. Product misuse can result in a hazard. You can compromise the safety protection built into the product if the product is damaged in any way. If the product is damaged, return it for repair.



Contact

DEICO Head Office

Teknopark Ankara, Serhat Mah.,
2224 Cad., No:1 F Blok, Z-12,
Yenimahalle, Ankara, Türkiye

support@deico.com.tr

+90 312 395 68 44



www.deico.com.tr

